

P2 ENGLISH MARKING GUIDE

QUESTION 1: Fill in the missing letters.

(5 marks)

1. In the morning, we say, "G- - d mo - - ing."
2. Some of the subjects we learn at school are: a) Ma- - h; b) Sc- - nce; c) En- - ish.

ANSWER/ 5marks

1. Good morning.

a) Math.

b) Science.

c) English

QUESTION 2: Make four sentences from this table. (4 marks)

She		Swimming.
We	Like	Kicking the ball.
He	Like	racing.
They	s	riding a horse.

Answers:

- a) She likes swimming
- b) We like kicking the ball
- c) He likes riding a horse
- d) They like racing

QUESTION 3: What time is it? (3 marks)

- a) 12:00 :
- b) 3:15 :
- c) 7:30 :

ANSWERS

- a) It's twelve o'clock.
- b) It's a quarter past three
- c) It's a half past seven

QUESTION 4: I. Match the pictures with the words. (4 marks)



a) pineapple



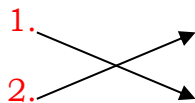
b) meat



c) beans

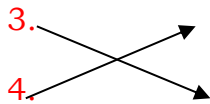


d)maize



a.

b.



c.

d.

QUESTION 5: Write the words correctly. (5 marks)

1.oyb

2.thermo

3.abll

4.taog

5.kcoc

Answers /5

1. boy

2. mother

3. ball

4. goat

5.cock

QUESTION 6: Complete the sentences using the following words. (4 marks)





Fetches, lives, arrives, makes

- a. Youat school at 7.30 a.m.
- b. Kamana.....water from the tap.
- c. Keza.....her bed every day.
- d. I.....in Musanze.

Answers

- a. arrive
- b. fetches
- c. makes
- d. live

QUESTION 7: How is the weather? (cloudy, windy, rainy, sunny) (4 marks)

1.	2.
	
3.	4.
	

Answers:

1. sunny
2. rainy
3. windy
4. cloudy

QUESTION 8: Fill the gaps with “Where” or “What.” (4 marks)

- 1).....colour is a crow?
- 2).....do fish live?
- 3).....are whales found?
- 4).....is the hyena doing?

B. /5

1. what
2. where
3. where
4. what

QUESTION 9: Complete the following sentences. (4 marks)

- a. Twenty-one minus seven equals.....
- b. Thirty-three minus twenty-one equals...
- c. Twenty-six plus twenty-eight equals...
- d. Sixteen times five equals

ANSWERS

- a. Twenty-one minus seven equals fourteen.
- b. Thirty-three minus twenty-one equals twelve
- c. Twenty-six plus twenty-eight equals fifty-four
- d. Sixteen times five equals eighty

QUESTION 10: Read the passage and answer questions. (3 marks)

Text: Shema on Monday

Last Monday, Shema woke up at 6 o'clock. He took a bath and put on his uniform. He brushed his hair then took breakfast. Then, He brushed his teeth. He took his bag and walked to school. At school, he greeted his friends. We

cleaned our classroom. Lastly, we arranged the desks. We do all these activities every day. (Adapted from *Spotlight*; P.171)

Questions

1. When did Shema wake up?
2. How did Shema do before going to school?
3. What did he carry to school?

ANSWERS

1. at 6 o'clock.
2. He woke up early, took a bath, put on uniform, brushed his hair,
3. He carried a bag.

END